

# THE HOPE CENTER

**Mission:** To honor God by developing healthy communities where the vulnerable flourish.

**Vision:** We envision a safe, vibrant neighborhood where people of all types flourish. Our east-side community will transform from a violent, hope-starved, and declining neighborhood into a safe, pleasant place to live. Those in need will have the hope and support they need to improve their quality of life. Our community will become one of the best places in Kansas City for families to raise great kids.

**Who We Are:** We are a christian community development organization that, out of our belief in God, is working diligently to renew the forgotten, impoverished east-side community where we live and serve. We are investing in its people, in particular the youth, anticipating that their transformed lives will offer the hope and leadership needed for our inner city community to flourish.

**The Hope Center Neighborhood:** The Oak Park, Ivanhoe, Palestine and Sante Fe Neighborhoods in Kansas City, Missouri's east-side once made up a prosperous community. Sadly, this area, which produced leaders like Walt Disney, Buck O'Neil, and Alvin Brooks, has deteriorated into one of Kansas City's most difficult, forgotten, and ravaged communities. Substandard housing, high unemployment, drugs, and crime left the neighborhoods in ruin and its residents searching for hope. The youth have been particularly vulnerable, often unable to overcome the educational deficiencies, violence, drugs, and sexual pressures they are confronted with daily.

## The Hope Center Neighborhood Statistics

### Low Income

- 76% of the Central High School students in our neighborhood are classified as economically disadvantaged. This figure tied with another school as the highest percentage of such students in the entire metro area.
- Over 90% of neighborhood elementary and middle school students receive free or reduced lunches.

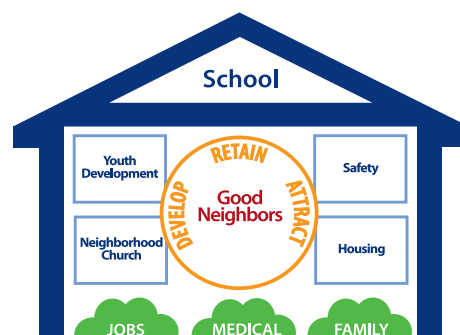
### Dangerous

- 386 ex-offenders still on parole live in our 64128 zip code.
- Homicide is one of the leading causes of death.

### Poorly Educated

- Less than 50% of neighborhood youth graduate from high school.
- Less than 15% even start attending a four year college.
- Less than 15% of the neighborhood youth tested "proficient" on state tests.

**Our Strategy:** For 12 years The Hope Center has been entrenched in our community as a fellow neighbor and partner. Our plan for transformation comprises several initiatives that any healthy neighborhood must have. Our commitment today includes a strong youth development ministry, a medical center, a public charter school, and in the near future a neighborhood church. Housing and safety initiatives have begun and will expand as resources allow. The diagram below depicts a strategy that will lead to the transformation of our community.



# THE HOPE CENTER PROGRAMS

## Hope Youth Ministries

**Mission:** To reach and develop urban youth into world-class Christian Leaders.

**Vision:** We are developing a close-knit group of urban youth who have committed their lives to following Jesus Christ. These youth partner with Christian adults to develop life and leadership skills that will enable them to reach their peers and to restore the neighborhoods where they live. The Hope Center youth are not only empowered to lead their peers today, but are also equipped to become successful, dynamic adult leaders tomorrow.

**Background:** Youth are given a strong Christian foundation through our Outreach Bible Study (1st - 6th grades) and Teenage Bible Study (7th-12th grades). Select, dedicated youth can apply to our leadership development program, Leaders In Training. Here youth are tutored, mentored and disciplined to be world-class Christian leaders.

---

## Hope Family Care Center

**Mission:** To honor God by providing quality, personal health care.

**Vision:** We envision all residents of our east-side community receiving quality, personal health care, enabling them to achieve optimum health. Preventative health care will become normal, regardless of one's income. Sustained high quality, personal health care will contribute to the transformation of our community.

**Background:** Hope Family Care Center is a sliding scale, fee-based primary health care provider seeking to meet the medical needs of an underserved community, many of whom are uninsured. Hope Family Care Center offers a wide range of services including full prenatal care, adult and child immunizations, well-checks, physicals and laboratory services.

---

## Hope Leadership Academy

**Mission:** To provide a world-class neighborhood school whose students excel in a culture of academic rigor, character development, and caring relationships.

**Vision:** We envision a vibrant, close-knit neighborhood based school where all students reach for and attain their highest goals. By creating a caring and supportive environment with high expectations, we will empower students to become enthusiastic learners and respectful citizens who work diligently to better themselves and their neighborhood. Students will experience a high level of success both academically and in the world around them, which will strengthen families and the neighborhood we serve.

**Background:** Hope Leadership Academy is a K through 2nd grade neighborhood-based charter school. It will eventually serve K through 8th grades by adding one grade level per year.

---

## Hope CDC

**Mission:** To provide quality, affordable housing so that the vulnerable flourish.

**Vision:** We envision all residents of our east-side community having the opportunity to live in quality affordable homes in a safe environment. Our neighborhood will shift from transiency, decline and violence to stability and peace, creating a vibrant place to raise great kids.

---

## Common Grace Community Church

**Rule of Life:** To seek God, to love each other, to bless the world around us.

**Vision:** We envision a community of followers of Jesus who choose to live in our inner city neighborhood. As a part of seeking Jesus, we are committed to loving each other and to blessing the neighborhood where we live. A supernatural love radiates from this Christian community and attracts many of our neighbors who were far away from God. As this love draws in more and more of our neighbors, our impoverished inner city neighborhood is transformed into a place where families flourish and God's shalom is present.